

PELOPONNESE

The birthplace of European civilisation; fabulous beaches, spectacular landscapes, excellent local cuisine and Greek, Roman, Venetian and Byzantine antiquities galore – one of the most authentic regions of Greece





Aghios Nikolaos



Stoupa

The Peloponnese has for too long been ignored by visitors. There seems to be a notion that Greece is about islands and that the mainland is, well, just the mainland!

European culture was born in the north Peloponnese. The ancient sites of Corinth, Mycenae, Epidaurus, Olympia, Argos, Tyrins and Nemea are outstanding. To the west, the Messinian peninsula has the best beaches, is much greener with a gentler landscape and has its fair share of sites, namely Olympia, Ancient Messinia and Nestor's Palace. Along the coast there are two dramatic, Venetian castles Methoni and Koroni.

Further south is the legendary Mani region, never conquered by the Turks; craggy and wild, with the Taygetos mountains running along its spine. Here you will find the



UNESCO World Heritage site of Byzantine Mystras, the caves of Diros and right to the east the medieval fortified rock island of Monemvasia, joined to the mainland by a causeway.

Multi-Centre Options

Combine a week in the south with a week in the north via our sister company Sunvil.

Long ignored by visitors to Greece a magical land of history and culture

STOUPA & AGHIOS NIKOLAOS

The delightful village of Stoupa lies just over an hour's drive south from Kalamata and is the closest thing the Mani has to a small resort, thanks to its two beautiful, sandy beaches, Kalogria and Stoupa. The setting is complemented with a backdrop of olive covered hills and the magnificent Taygetos mountains, making for a truly stunning location with all the facilities for a relaxed holiday. You should not be surprised to read that Stoupa holds particular appeal for couples of all ages and younger families. Despite Stoupa's popularity (the beaches do get busy in season) it remains low key, evening entertainment here still centred around a wide variety of good quality tavernas. Facilities include several supermarkets, a good bakery and ATMs. A range of interesting excursions last year included Olympia, Mystras and the spectacular Dirou Caves, and small bicycles, pedalos and motorboats can be hired. There is a lovely footpath above the sea which leads you to neighbouring Aghios Nikolaos in about an hour. Aghios Nikolaos is the archetypal sleepy Greek fishing village, and the cafés and restaurants above the exquisite small

harbour here are the perfect place from which to watch the boats come and go. Pantazi beach is a 15 minute walk to the south, its wide stretch of sand/shingle shaded by trees. The whole area is excellent for walking so we are pleased to offer our clients a free walking guide on request.

KILADA

Fertile and unspoiled, combined with a flavour of old Greece is what makes this area so enchanting and worth exploring. Two and a half hours from Athens, the sleepy village of Kilada, with a population of approximately 1000 people, is a little known corner of the eastern Peloponnese. This delightful, small fishing village, nestled in a tranquil bay and surrounded by rolling countryside, untouched by tourism is the perfect escape. Traditional tavernas sit on the water's edge and the safe sandy beach of Lepitsa is but a short walk away. Further afield, the nearby resorts of Ermoni and Porto Heli are easily reached by car from where a short boat journey reaches the islands of Hydra and Spetses. To the north are the ancient sites of Epidavros, Corinth, Mycenae and Nemea.





VILLA IBISCUS

AGIOS NIKOLAOS • PELOPONNESE

Amidst a gentle hillside of olive trees, Villa Ibisus has been handpicked by our team for its splendid views and setting. It is our only property in the Mani and is an excellent base for exploring the region; the fishing village of Aghios Nikolaos is a few minutes' drive and Stoupa can be reached in ten minutes. Further afield the Taygetos Mountains are a popular destination for walkers, and for history lovers there are abandoned stone towers and atmospheric villages to discover and explore.

This is a single-storey property, tastefully designed and decorated using a combination of modern furniture and traditional pieces. Outside, the swimming pool and terrace enjoys splendid vistas across the Gulf of Messinia and lush surroundings - it is easy to while away the hours here.

-  Sleeps up to 4
-  2 bedrooms (1D-1T)
-  1 bathroom
-  Car hire included
-  Swimming pool
-  Air conditioning



The setup

- Lounge
- Kitchen
- Double bedroom
- Twin bedroom
- Bathroom
- Cloakroom
- Swimming pool (7m x 3.5m)










SEA VIEW VILLA

KILADA • PELOPONNESE

For a luxurious stay in the Peloponnese look no further than Sea View Villa. From daily maid service to the option of having your own personal chef making Greek classics, this is the perfect choice if you're looking to indulge and treat yourself.

The villa holds up to 10 people in its spacious bedrooms but it is also a great option for couples who want to experience a romantic getaway in an idyllically secluded property. Relax in the open-plan living space and feel the natural warmth as the sun streams through the floor-to-ceiling windows; enjoy dinner in the garden, bursting with colour and local fauna, and take a refreshing dip in your private pool.

There's a variety of walks in the surrounding area for those who wish to venture outside of the villa - although it can be hard to tear yourself away. The sea is only 150m and a bit further on is a classic fish taverna and beach. Nearby Kranidi and Port Heli have a good selection of tavernas.

-  Sleeps up to 10
-  4 bedrooms (4D) + Annex
-  3 bathrooms
-  Car hire included
-  Swimming pool
-  Air conditioning
-  WiFi

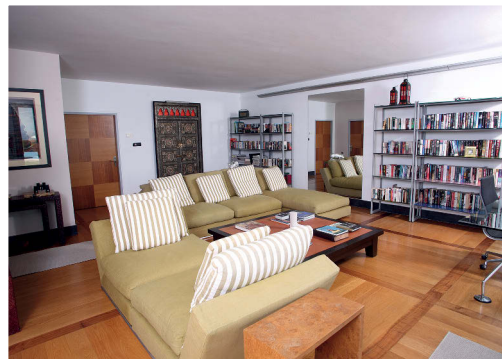
The setup

Main villa:

- Open-plan lounge with dining and kitchen area leading out to a sea facing terrace
- Master suite with double bed, en suite bathroom and large sea facing terrace

Guest wing:

- Lounge with large sea facing balcony
- Three double bedrooms, one with en suite bathroom
- Bathroom
- Guest weekend room with lounge leading to pool terrace
- Swimming pool (20m x 7.5m)





Sea View Villa

For more detailed information & photos visit www.gicthevillacollection.com